



VESS is a resilient seated butterfly valve , with an EPDM / NBR rubber seat on valve body . The rubber sealing provides both sides bubble tight shut off and the pin design provides stronger and fixed connections between shaft and disc that ensure the stem stays firm during operation.

Features:

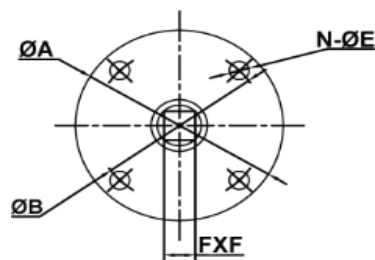
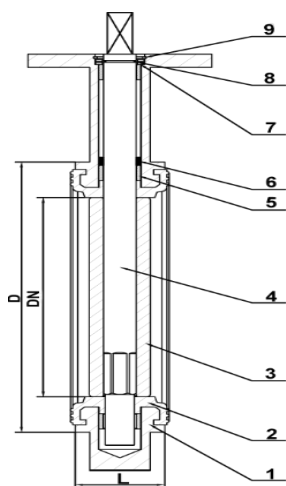
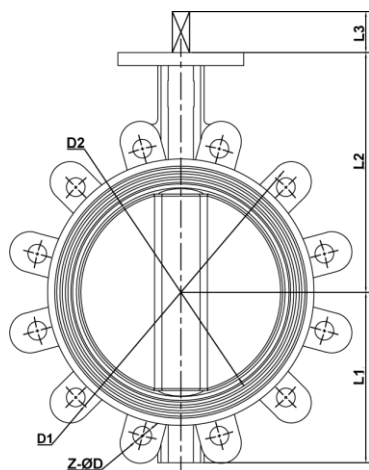
- Pin design for better operation without components loose and leakage during operation .
- EPDM / NBR rubber on valve body ensures fully corrosion resistance .
- Special notch plate provides long term services and corrosion resistance .
- Body is coated with epoxy resin for corrosion resistance to maximize service life .
- Butterfly valves standard with a hard back seat . No movement of the seat which results in a constant torque , and :
 - Dimensionally stable seat sealing surface
 - Minimal seat wear , extending seat life
 - Blow-out proof seat
 - Easily field replaceable
- Rigid design steel lever and with stainless steel pin and spring parts provides much better corrosion resistance and long service life .
- Bi-directional tight shut off closure .
- PTFE bushings on the upper shaft ensure stronger positioning function during operation .

Pressure & Temperature

Nominal Pressure	16 bar
Hydraulic Shell Test Pressure	24 bar
Hydraulic Seat Test Pressure	17.6 bar
16 Bar at	- 10°C ~ 100°C
Suitable Medium	Water

Service Fields

General water supply , HVAC , water treatment , fire fighting , chemical system , and industry , etc .



Technical Data

Size Range	DN 50mm ~ DN 600mm (DN350 above available upon request)
Manufacturing Design Meets	ISO 5752 / DIN 3202 / EN 593 / BS 5155 / API 609
Flange Standard	BS EN 1092-2 PN16
F/F (Face to Face) Standard	EN 558-1 , MSS SP-67
Top Flange Standard	ISO 5211/1

Material Specification

Parts Name	Material
1 Body	Ductile Iron
2 Seat	EPDM
3 Disc	Ductile Iron /SS304
4 Stem	SS416
5 Bushing	PTFE
6 Y-Ring	EPDM
7 Gasket	45#
8 Circlip	Steel
9 Circlip	Steel

Note : 1.Valve 200mm and above are supplied as standard with gear operated.
2. Bolt circles are designed to fit BS4504 PN16 , other Flange specify on order .

Dimensions - Millimetres

Size (DN)	50	65	80	100	125	150	200	250	300
L	43	46	46	52	56	56	60	68	78
L1	66	86	94	110	128	140.5	170	205	238.5
L2	131.5	140	154	173	189	199	236	277	317
L3	22	22	22	25	30	30	35	24	24
D	92	105	125	151	185	206	264.5	322	373.5
D1	125	145	160	180	210	240	295	355	410
D2	52.2	63.9	78.5	104	123.3	155.4	202.3	250.3	301.3
ØA	70	70	70	90	90	90	125	125	150
ØB	50	50	50	70	70	70	102	102	125
FXF	9	9	9	11	14	14	17	22	22

* We reserve the right to alter specifications or dimensions without prior notice.

Distributed By :



Maxwell Valve Industry Sdn Bhd (799530-K)

Vess Valve Sdn Bhd (922423-U)

No.26 , Jalan Utama 2/28 ,
Taman Perindustrian Puchong Utama.
47140 Puchong , Selangor Darul Ehsan , Malaysia

Tel : 60(3) 8060 3325

Fax : 60(3) 8060 3341

E-mail : sales@maxwellvalve.com

Web : www.maxwellvalve.com