

Dual Flap PN25

VESS Dual Flap Check Valve with 2 half discs and a vulcanized rubber seat , generally installed in front of pump to prevent back flow when the power shut off , and for prevention of water hammer and water slamming , to keep the pipeline system in a safe operation environment .

Features

- Economic version of wafer and light weight design , save space and reduce installation cost .
- With stainless steel spring to close quicker before reverse flow to prevent water hammer .
- With vulcanized rubber seat on body , can prevent rubber seal being flushed out during operation .
- Dual disc design to ensure bubble tight closure and prevent leak and back flow .
- A hanging hook is provided for sizes larger than 200mm for easy installation and disassembly .
- Epoxy coated body for better corrosion resistance .


Pressure & Temperature

Pressure Rating	25 bar
Hydraulic Shell Test Pressure	35.7 bar
Hydraulic Seat Test Pressure	27.5 bar
Working Temperature	- 10°C ~ 100°C
Suitable Medium	Water

Technical Data

Size Range	DN 50mm ~ DN 300mm
Manufacturing Standard	BS EN 12334 : 2001 (BS 5155)
Flange Standard	BS EN 1092-2
F/F (Face to Face) Standard	BS EN 558-1

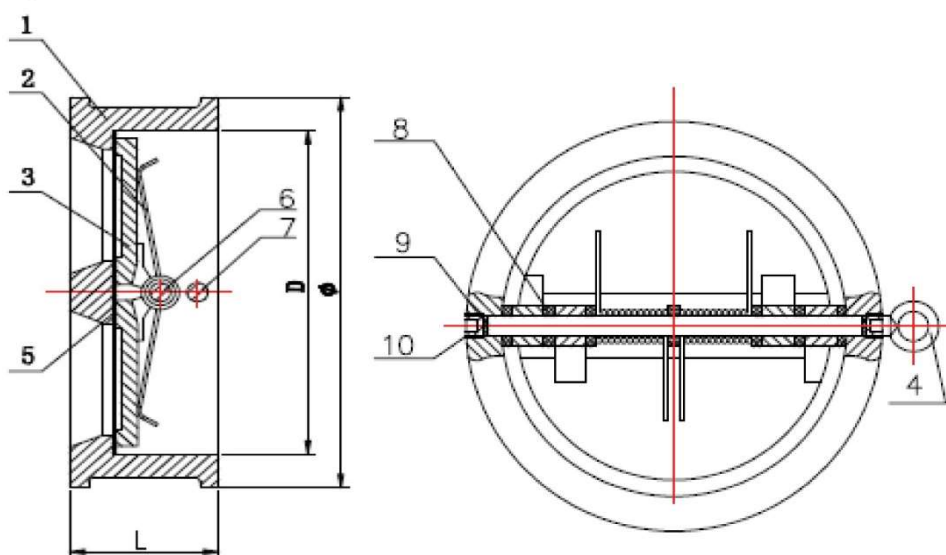
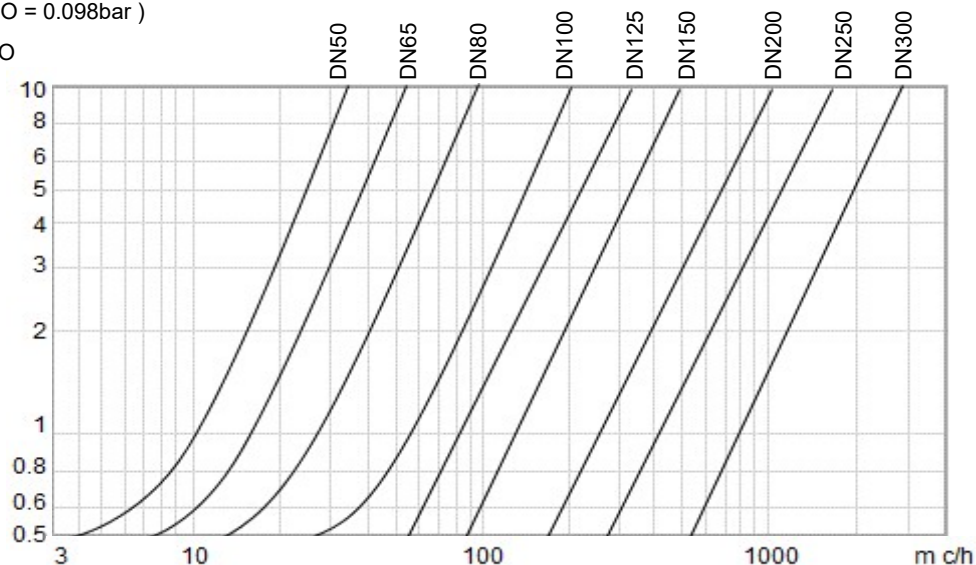
Service Fields

General clean water supply , HVAC , fire-fighting , irrigation , cooling system .

Head Loss Chart

Fluid : water (1m H₂O = 0.098bar)

m H₂O



Material Specification

No.	Component	Material	Specification
1.	Body	Ductile Iron	EN GJL 500-7
2.	Spring	Stainless Steel	304S31
3.	Disc	Stainless Steel / 304S31 / Ductile Iron	EN GJL 500-7
4.	Hanging Hook	Steel	Alloy
5.	Seat	Rubber	EPDM / NBR
6.	Shaft	Stainless Steel	410S21
7.	Shaft	Stainless Steel	410S21
8.	Bushing	Plastic	PTFE
9.	Gasket	Rubber	NBR
10.	Bolt	Carbon Steel	Alloy

Dimensions - Millimetres

Size(DN)	L	D	øPN25
50	43	65	107
65	46	80	127
80	64	94	142
100	64	117	162
125	70	145	192
150	76	170	218
200	89	224	273
250	114	265	329
300	114	312	384

Tabella Kv-DN

Size (DN)	Kv(m ³ /h)
50	34
65	54
80	95
100	200
125	320
150	467
200	990
250	1584
300	2783

* We reserve the right to alter specifications or dimensions without prior notice.

Distributed By :



Maxwell Valve Industry Sdn Bhd

Vess Valve Sdn Bhd (799530-K)
(922423-U)

No.26 , Jalan Utama 2/28 ,
Taman Perindustrian Puchong Utama.
47140 Puchong , Selangor Darul Ehsan , Malaysia

Tel : 60(3) 8060 3325

Fax : 60(3) 8060 3341

E-mail : sales@maxwellvalve.com

Web : www.maxwellvalve.com